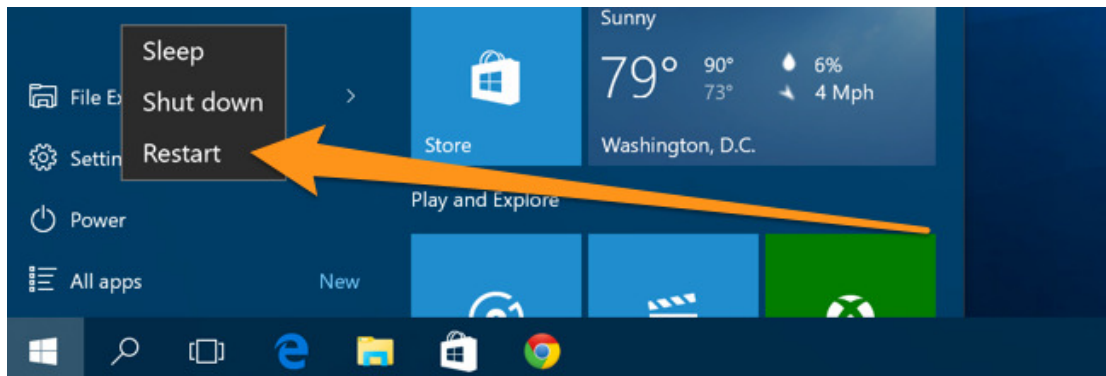


HOW TO INSTALL A GENIE® INSTRUMENT DRIVERS ON WINDOWS 8 & 10

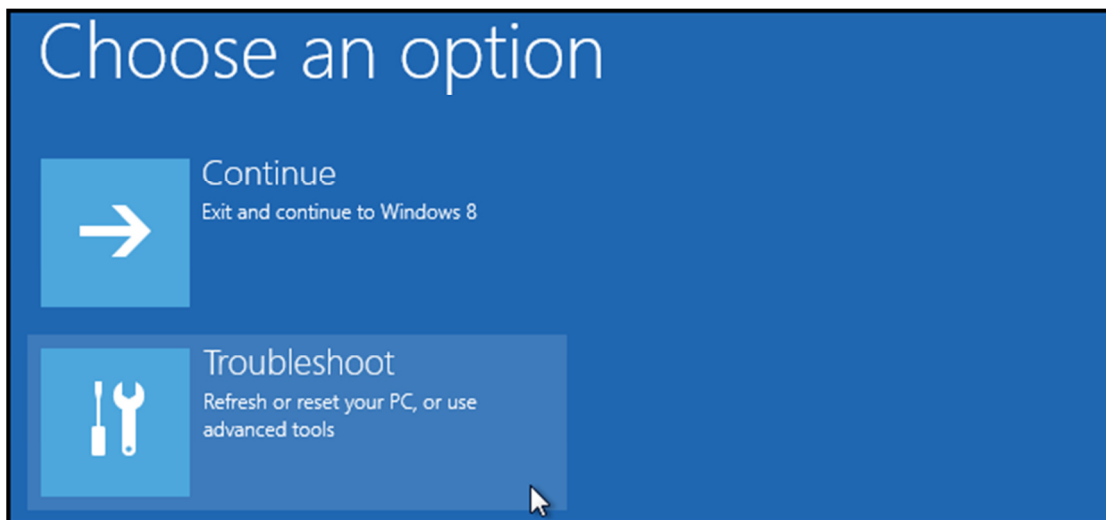
To install the Genie® instrument drivers on Windows 8 & 10 requires disabling 'Driver Signature Verification'.

To disable driver signature verification, first we need to get into the 'Troubleshooting' options in the Windows Boot Manager. The easiest way to bring this screen up is select 'Restart' from the power options menu (on Windows 8 that's under Charms or on the login screen, and in Windows 10 it's on the Start Menu).

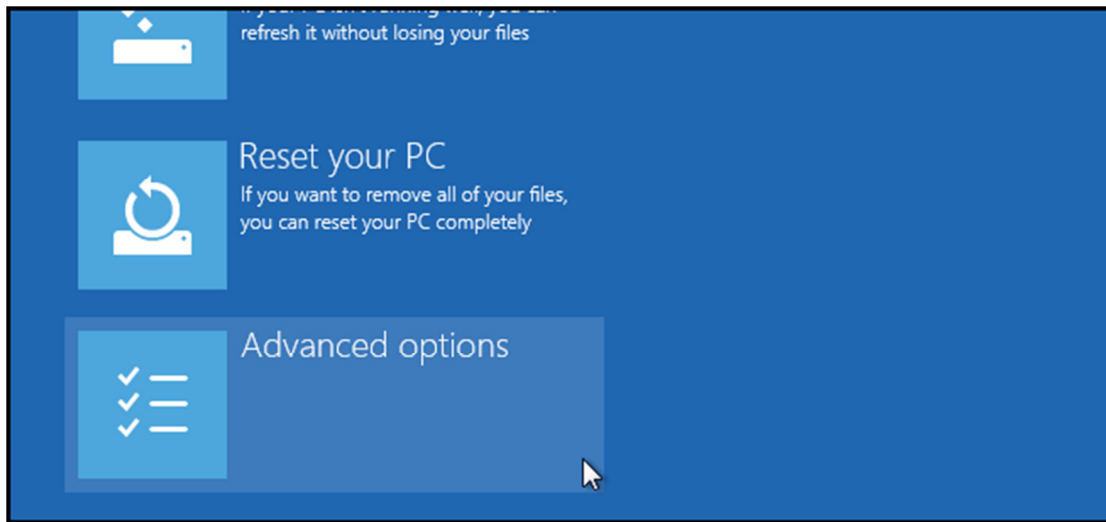
1. **Hold down the SHIFT key** while you click Restart.



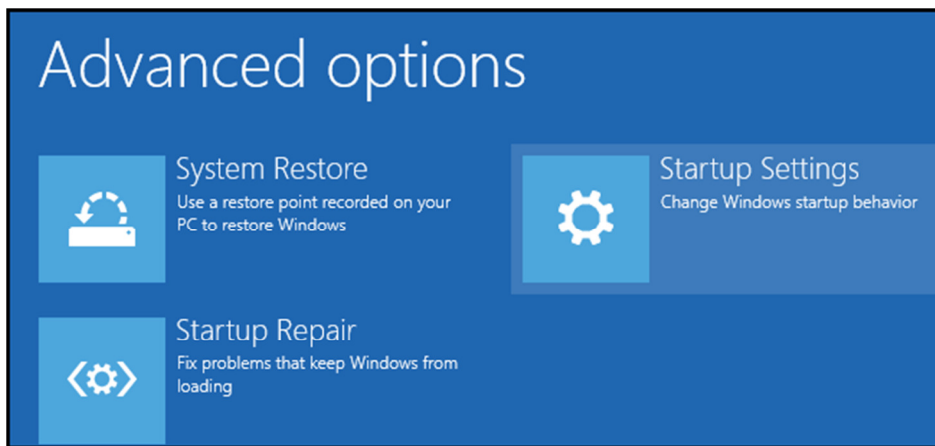
2. Once your computer has rebooted you will be able to choose the 'Troubleshoot' option.



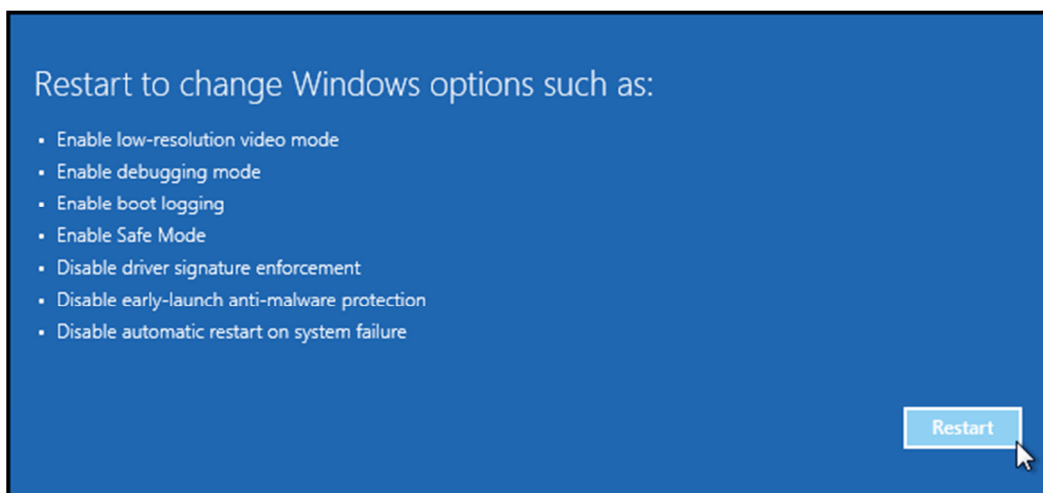
3. Click 'Advanced options'.



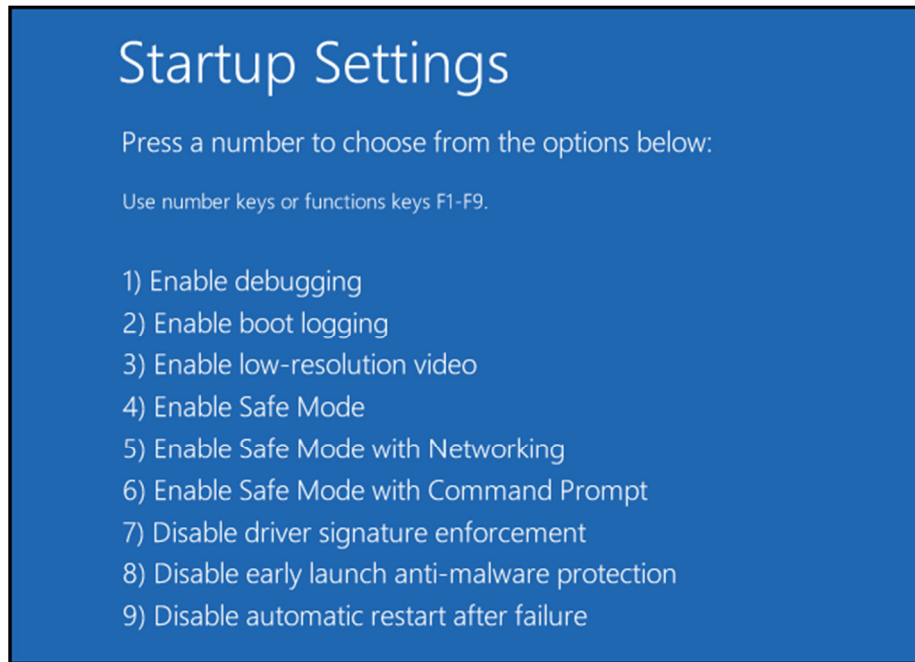
4. Then 'Startup Settings'.



5. Click 'Restart'.

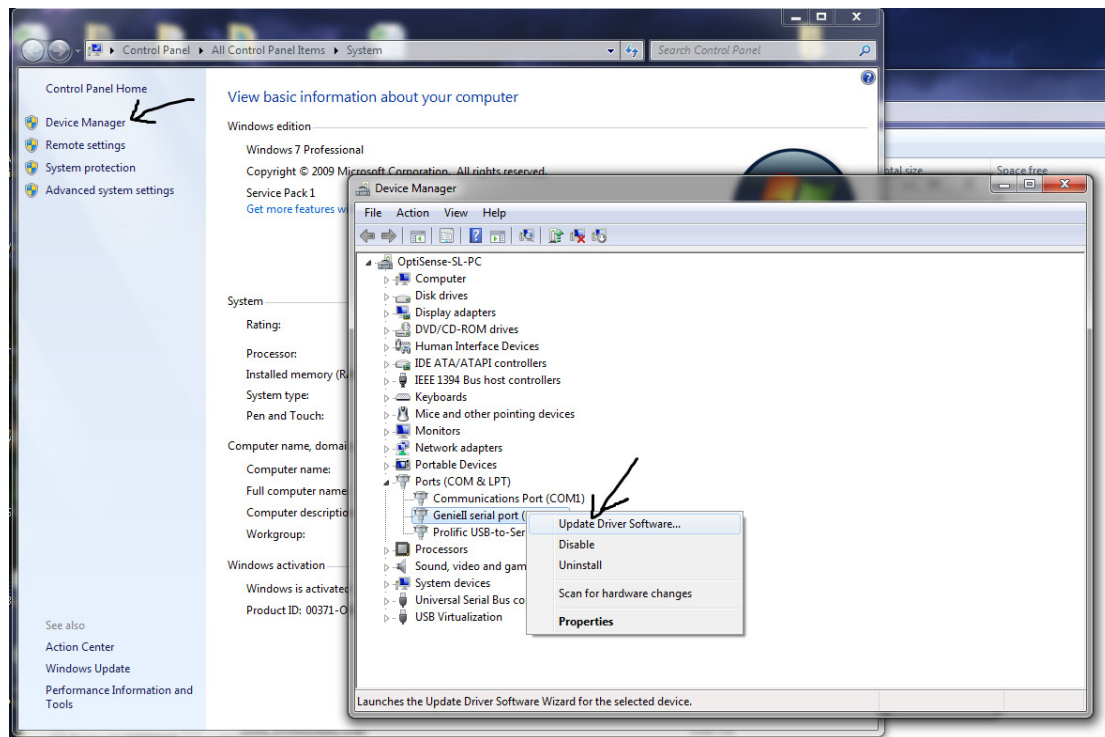


6. You will be given a list of startup settings that you can change. The one needed is “Disable driver signature enforcement”. To choose the setting, you will need to press the F7 or 7 key. The computer will now restart into Windows.

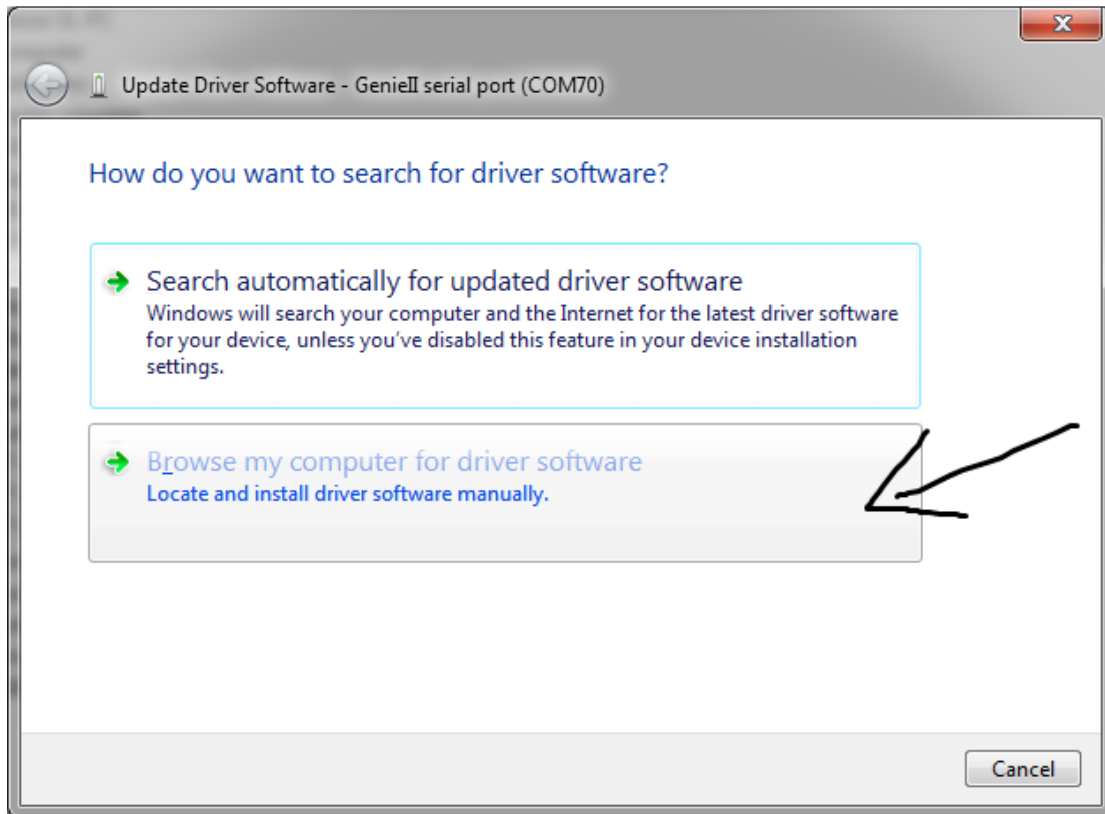


7. To install the driver, turn on the instrument and plug it in. Right click on 'Computer', and click Properties.

8. Select 'Device Manager'. Look for the 'Genie' device **anywhere** in the list (you may have to expand the device groups, it usually appears in '**Other devices**' and is called '**Genie communications**') and then right click on it, and click 'Update Driver Software...'



9. The following window should appear, click 'Browse my computer for driver software'



10. Press 'Have Disk...' and browse for the driver file (.inf file) located on the USB drive that came with the instrument and click 'Next'. The driver will install. You may have a warning about the driver being 'Unsigned' but this is normal, click OK and the driver will be installed.

