

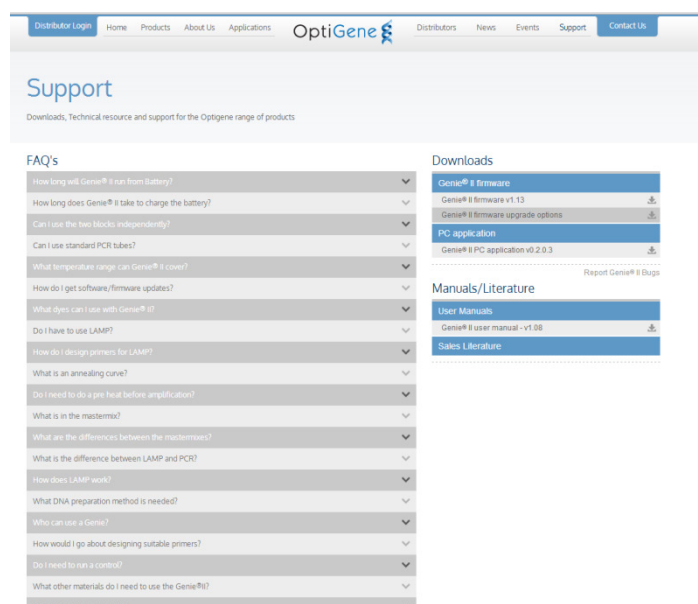
GENIE® II V1.28 SOFTWARE UPDATE

It is recommended to keep the software on Genie® II up-to-date. Upgrading to v1.28 will improve performance and add new features to Genie® II.

There are two types of software on Genie® II; the firmware, and the FPGA software. The current versions of firmware and FPGA software that are installed on Genie® II are displayed in the bottom left hand corner of the main menu screen.



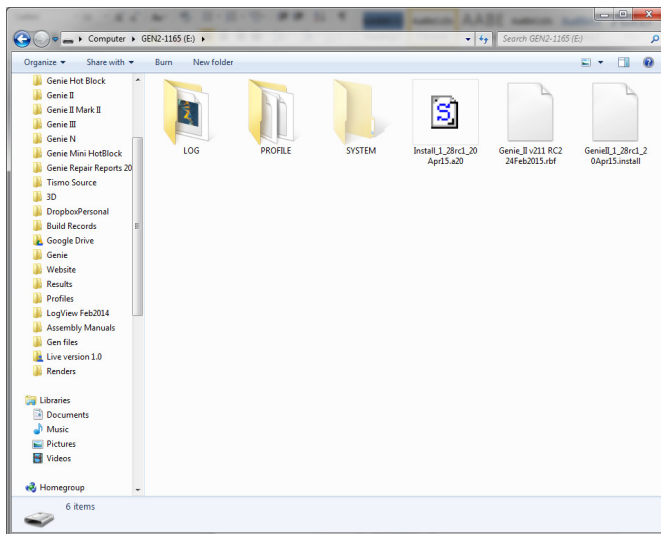
The latest version (v1.28) is available from <http://www.optigene.co.uk/support>



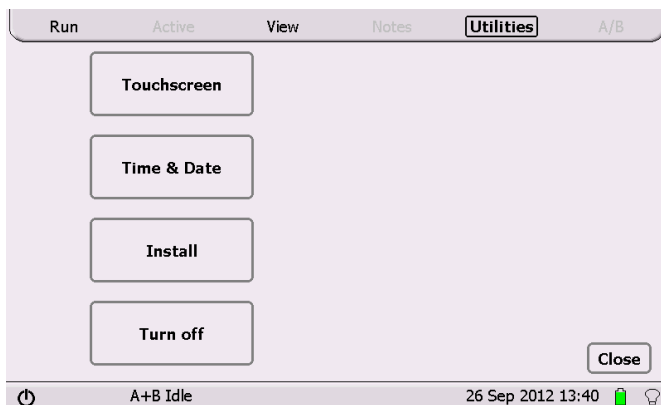
To download the latest firmware, click on the link and download and save the '.zip' file.

Open the '.zip' file and extract the contents to a new folder. The contents of the folder will include the latest firmware, FPGA software and this manual.

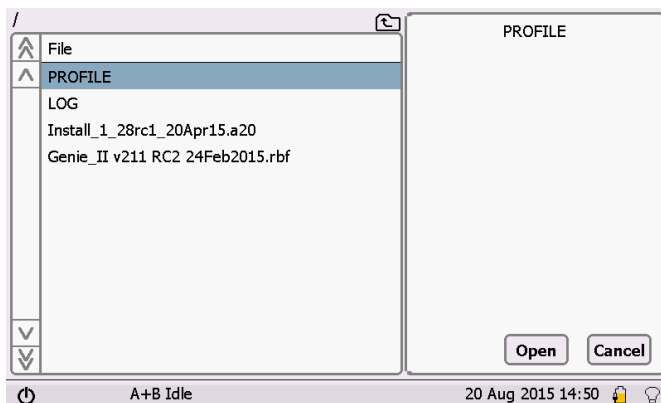
INSTALLING FROM V1.27 (& BELOW) TO V1.28 (NEW USER INTERFACE)



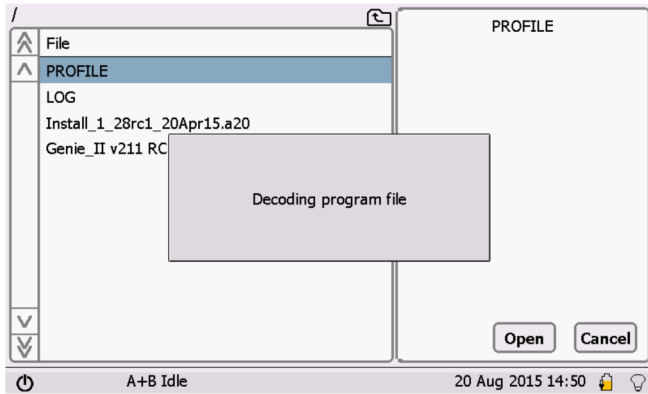
To install the updates, connect Genie® II to a computer. Navigate to 'My Computer' and open the Genie® II drive. The drive is named after the instruments serial number, e.g. GEN2-1105. Copy and paste (or drag) all of the files (except this manual) from the zip onto Genie® II.



Now on Genie® II touch 'Utilities' and touch 'Install'. Genie® II will prompt for a file to use for the update.



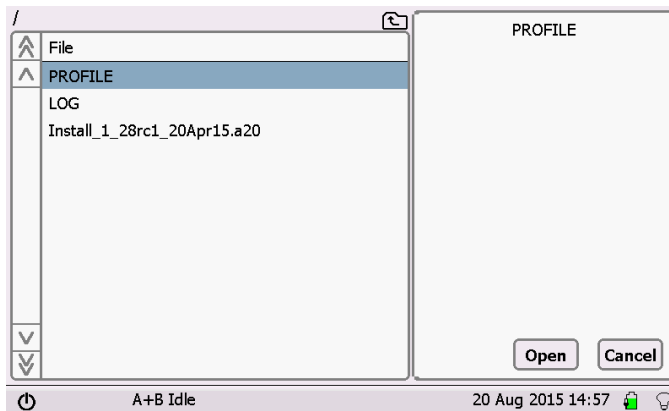
Touch on the file called **"Genie_II v211 RC2 24Feb2015.rbf"**, and touch 'Open'. Genie® II will then install the updated software. Please wait for it to finish before trying to do anything else.



The selected file will be uploaded to Genie® II. When it has finished, a message will be displayed on screen to say “Reset required” at which point turn the machine OFF and ON.



Once again, touch Utilities, and touch Install.

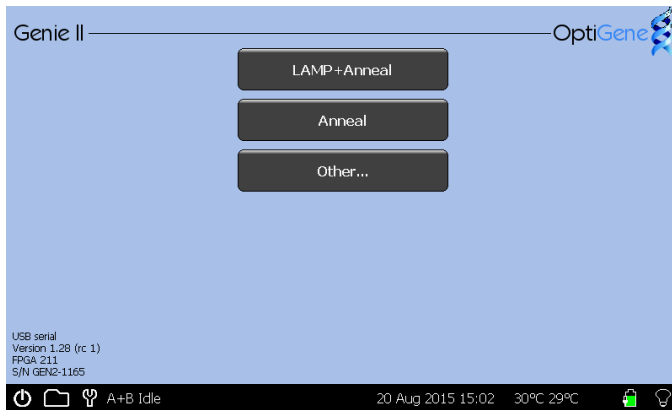


Touch on the file called “Install_1_28rc1_20Apr15.a20”, and touch ‘Open’. Genie® II will then restart on its own and install the software.

The machine will beep and it will display a green screen with a lot of text, this is normal. Please DO NOT TURN OFF the machine whilst it is doing this.

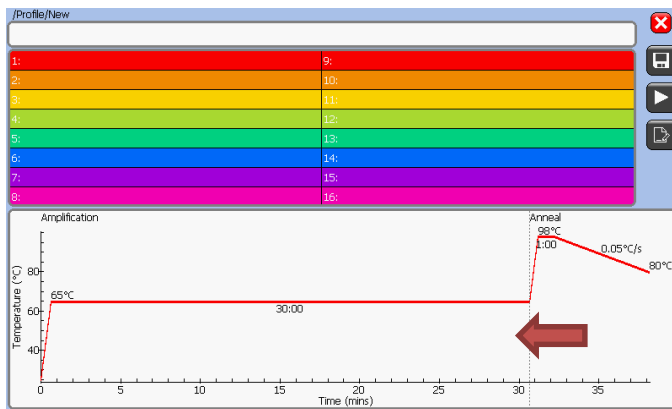
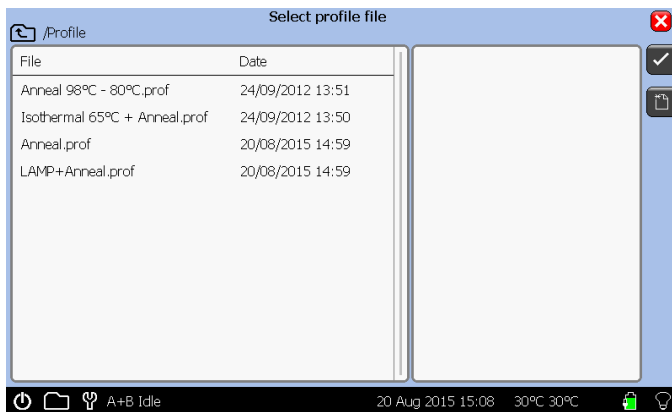
The instrument will restart when it has finished and display the OptiGene Logo.





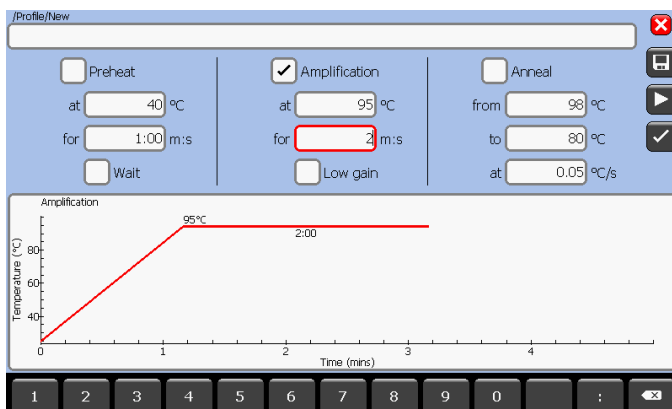
Click the OptiGene Logo to see the main menu. Click the 'Other...' button.

Click the 'new file' button on the right hand side.

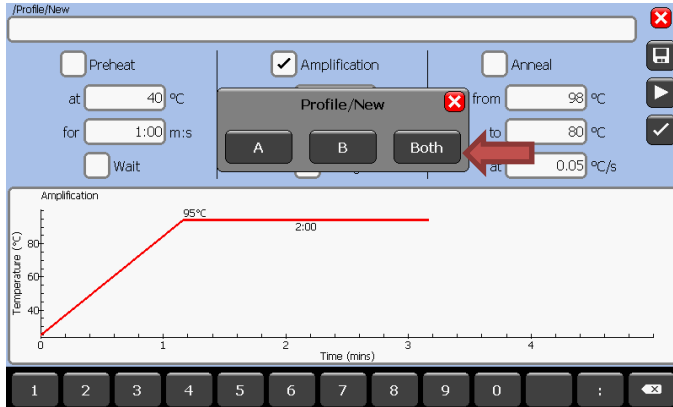


The profile screen will now be displayed. Click on the graph to display the profile values.

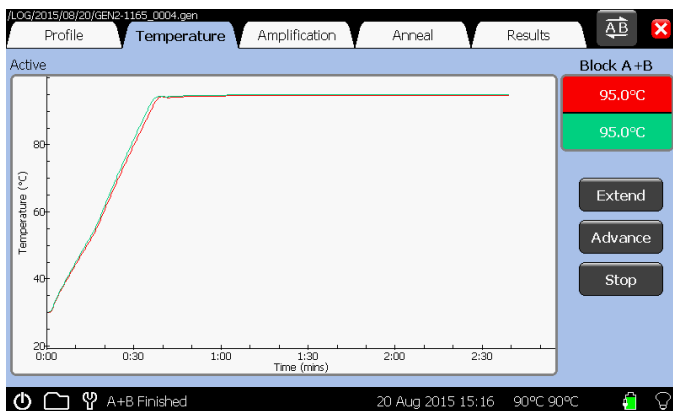
Change the Amplification temperature from 65°C to 95°C and the time to 2 minutes. Untick the Anneal phase.



Click the Start button.



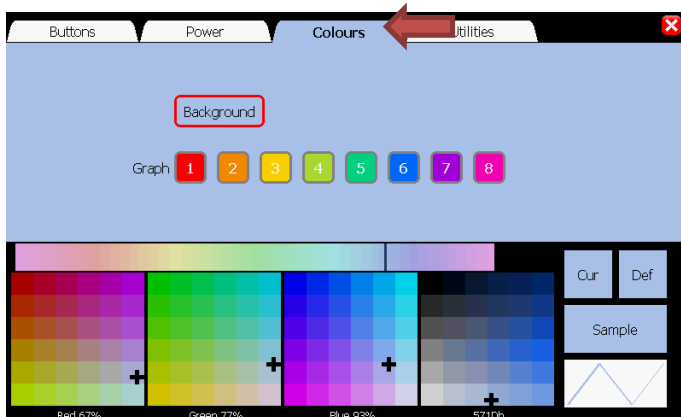
Touch 'Both' for both blocks.



When the run has finished. Close the run file by clicking on the cross in the top right corner.



Touch the Spanner to open Settings.



Click on the 'Colours' tab.



Select any colour in the colour palette.
The background colour will change.

Click the red cross in the top right corner to close the window. This will save settings set by doing the run at 95°C.



To change the colour back to default, go back to the Colours tab in Settings, and click 'Def'. Click the red cross to return to the main menu.

Please now install Genie Explorer from the OptiGene website in order for the instrument to be able to communicate with the PC (<http://www.optigene.co.uk/support>) as it will no longer run with the older PC software.